

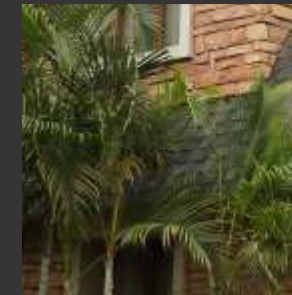


**+91 80880 07722**  
**marketing@citrusventures.in**

Citrus Ventures Pvt. Ltd. 1/A, Ulsoor Road, Bangalore - 560 042

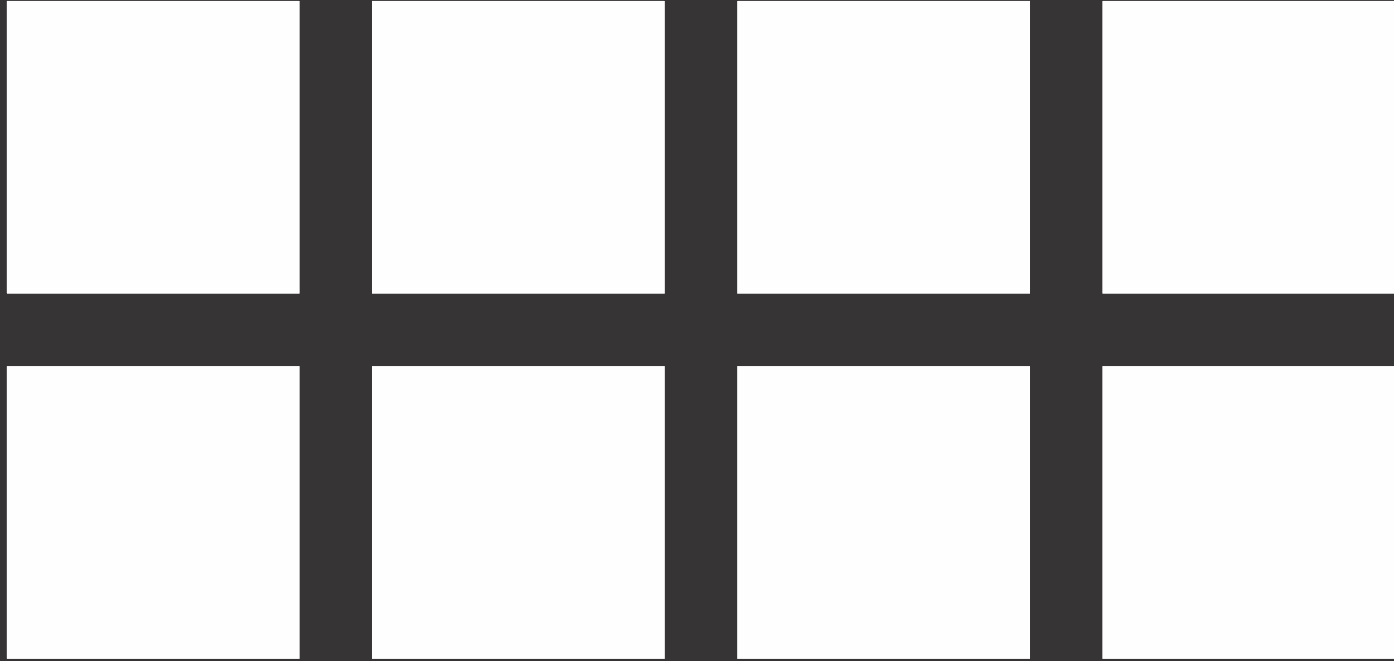


# Springvillae



*A slice of England in the City*





Actual Site Shot





Actual Site Shot

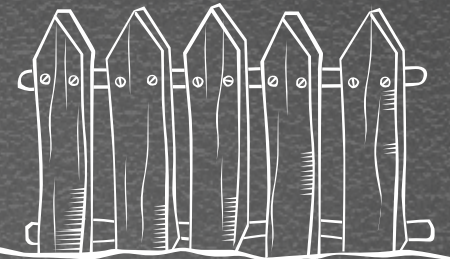
Find a piece of England in the most happening part of Bangalore! You may not be able to move to England, but you can move into an English life-style.

Springvillae is a unique gated community on Sarjapur Road within short driving distance to HSR Layout and Hosur Road. The villas are inspired and modeled on the typical Georgian era English country home. Each of the elegantly designed villas is lined with a beautiful landscaped garden at the entrance and has a private backyard.



The units are well ventilated, with French windows opening into the balcony on the upper floors and into the garden on the ground floor. The floors are made of imported marble. The doors and windows are made of Teak. All the construction material has been carefully selected with attention to form, function and finish.

The Villas have been specially designed to make efficient use of the available space. It has been streamlined for the new age family with designated spaces for a family room on every floor. The design has accounted for storage spaces to house utilities.



The amenities at Springvillae include a Georgian style 8000 sq.ft club house with a Gym and Swimming Pool. Discover the Multi-game indoor court specially designed by Leandersports. The pathways are a perfect place to take long walks while stopping by to greet a friendly neighbor. Its specially suited for those looking for more than just a place to live, Springvillae is a way of living.







Club House



An arm chair for the patio



A bone china tea set for the backyard



A guitar to serenade the beauty  
peeking from the balcony



A colourful creeper to grow around  
white picket fences



A hammock for that perfect  
afternoon nap



A tricycle for your child to explore  
the neighborhood



# SPECIFICATIONS

## BUILDING

Type of Structure	Framed Structure with Footings, Columns & Beams
Seismic Zone	Seismic Zone II
Building Walls	Block Masonary Wall Plastered on Both Sides
Internal Wall Finish	Smoothly Plastered with Lime Rendering

## PAINTING & POLISHING

Interior	Internal Acrylic Emulsion
Exterior	Exterior Grade Ace Emulsion

## ELECTRICAL

Power Requirement	5 KW Per Villas
Back Up Power For Villas	1 KW (Lighting Only)

## CP & SANITARY FIXTURES

UG Sewerage System	UPVC / PVC Pipes
Water Supply Piping	CPVC Pipes
CP Fittings	Jaguar
Sanitary Fixtures	CERA / Equivalent Make

## DOORS & WINDOWS

Main Door	Teak Shutter & Frame
Others	Flush Shutter with Teak Frame
Windows	Teak Shutter & Frame

## FLOORING

Living & Dining	Italian Marble
Master Bedroom	Laminated Wooden Flooring
Other Bedrooms	Marble
Balconies & Terrace	Anti Skid Designer Tiles

## TOILETS

Dado	Designer Ceramic Tiles
Flooring	Anti Skid Tiles





# FLOOR PLAN

Ground Floor



Carpet Area : 2262 SFT  
Built up Area : 2600 SFT  
Site Area : 65' x 25' = 1625 SFT

# FLOOR PLAN

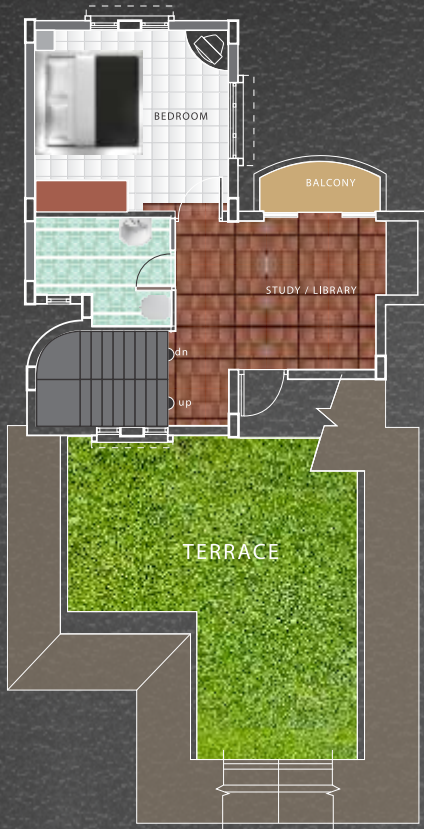
First Floor



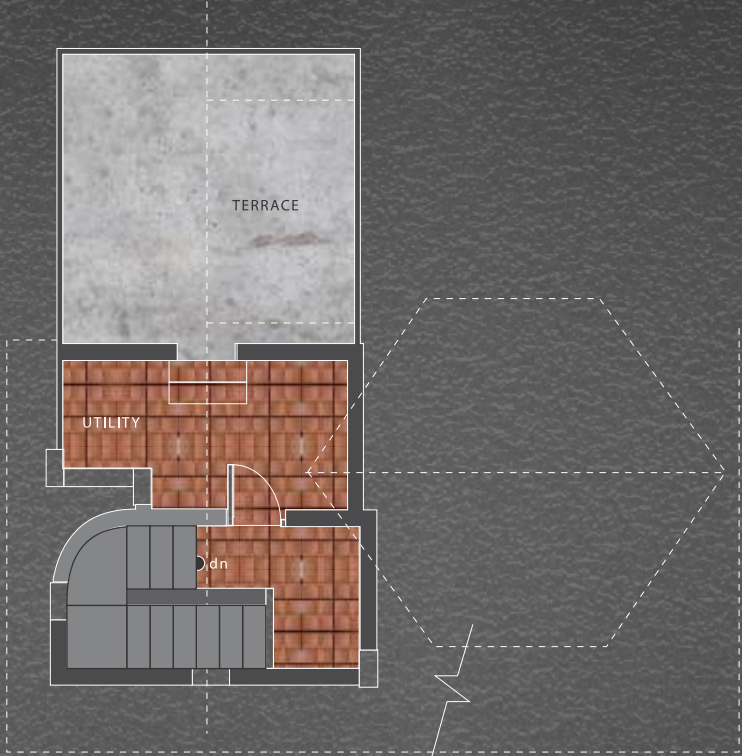


# FLOOR PLAN

Second Floor



Third Floor



All specifications, conceptual designs, dimensions, images and facilities shown here in are for the purpose of representation only. The same are subject to approval and changes without any notice or intimation and shall not constitute an offer or contract. The terms and conditions of agreement for sale between the parties shall prevail an be binding. Tolerance of +/-3% is possible in unit areas on account of design and construction variances. 1 square meter is equal to 10.764 Sq. Feet.